

EQUIP. TYPE *R390A/URR* EXP. NO.

*COL. 357-9225-00*

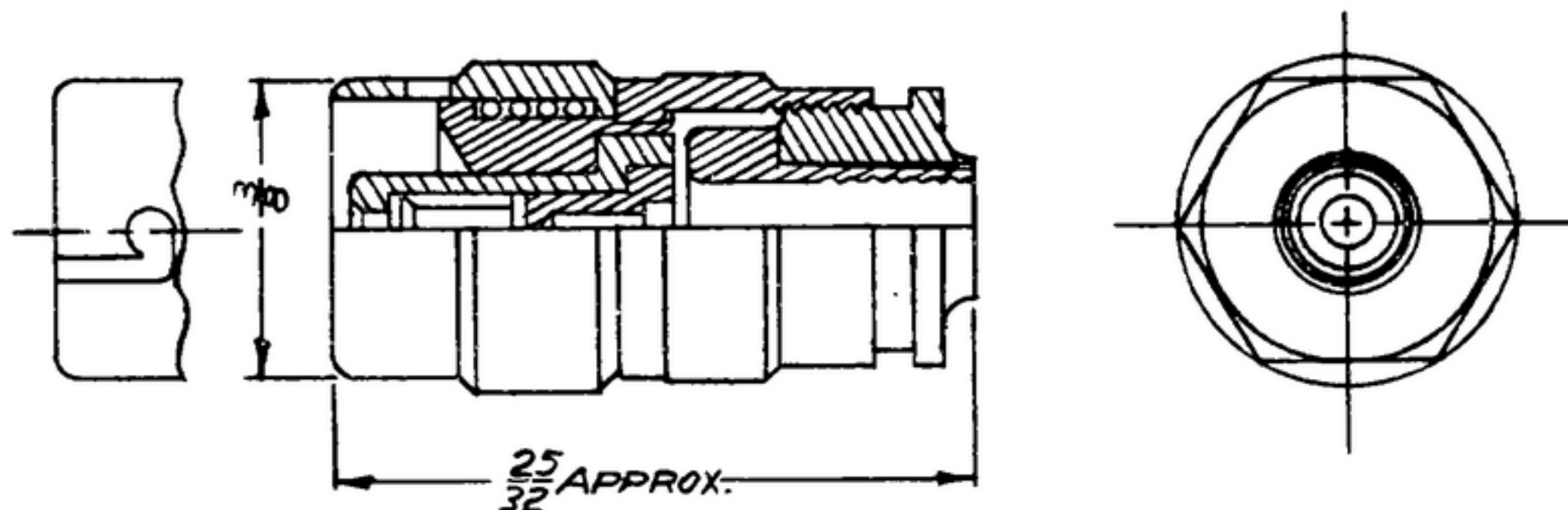
NOTICE: WHEN GOVERNMENT DRAWINGS, SPECIFICATIONS, OR OTHER DATA ARE USED FOR ANY PURPOSE OTHER THAN IN CONNECTION WITH A DEFINITELY RELATED GOVERNMENT PROCUREMENT OPERATION, THE UNITED STATES GOVERNMENT THEREBY INCURS NO RESPONSIBILITY FOR ANY OBLIGATION WHATSOEVER, AND THE FACT THAT THE GOVERNMENT MAY HAVE FORMULATED, FURNISHED, OR IN ANY WAY SUPPLIED THE SAID DRAWINGS, SPECIFICATIONS, OR OTHER DATA IS NOT TO BE REGARDED AS IMPLICATION OR OTHERWISE AS IN ANY MANNER LICENSING THE HOLDER OR ANY OTHER PERSON OR CORPORATION, OR CONVEYING ANY RIGHTS OR PERMISSION TO MANUFACTURE, USE, OR SELL ANY PATENTED INVENTION THAT MAY IN ANY WAY BE RELATED THEREBY.

THIS DOCUMENT HAS BEEN PURCHASED BY THE GOVERNMENT AND MAY BE REPRODUCED AND USED IN CONNECTION WITH ANY GOVERNMENT PROCUREMENT OR MAINTENANCE OPERATION.

\*FOR INFORMATION ONLY. CONTRACTOR MAY AT HIS OPTION DEVIATE FROM THESE PROCESS DETAILS.

REVISIONS

SYM	DESCRIPTION	DATE	APPROVAL
-----	-------------	------	----------



NOTES:

1. PART MAY BE NO. 45725 AS SUPPLIED BY INDUSTRIAL PRODUCTS CO., PHILADELPHIA, PA., OR EQUAL, PROVIDING IT MEETS THE FOLLOWING REQUIREMENTS AND DIMENSIONS SHOWN.

DESCRIPTION: MINIATURE, BAYONET LOCK, RF PLUG CONNECTOR FOR USE WITH MINIATURE 70 OHM COAXIAL CABLE.

INSULATION: POLYTETRAFLUOROETHYLENE.

VOLTAGE RATING: 500 VOLTS RMS, MAXIMUM.

FINISH: M351 PER SPEC MIL-F-14072.

COLLINS PART NO.	ITEM	QTY	PART NO.	DESCRIPTION	MATL.	MATL. SPEC.
------------------	------	-----	----------	-------------	-------	-------------

LIST OF MATERIAL

COLLINS PART NO. *559-0282-002*

COLLINS NO.	QTY	NEXT ASSY	USED ON
<del>558-0470-002</del>	1	SM-B-249118	
<del>558-0470-005</del>	3	SM-E-249101	SC-DL-248775

DRAWN *Harner* CHECKED *[Signature]* APPROVED

UNLESS OTHERWISE SPECIFIED:  
 DECIMAL DIMENSIONS INCLUDING HOLE SIZES MAY VARY  $\pm .005$   
 FRACTIONAL DIMENSIONS INCLUDING HOLE SIZES MAY VARY  $\pm 1/64$   
 MACHINED ANGLES MAY VARY  $\pm .1^\circ$   
 SHEARED ANGLES MAY VARY  $\pm .25^\circ$   
 BROKEN ANGLES MAY VARY  $\pm .1^\circ$   
 ECCENTRICITY BETWEEN ANY DIAMETERS ON THE SAME CENTERLINE SHALL NOT EXCEED .010 TOTAL INDICATOR READING.  
 ALL DIMENSIONS ARE FINISH DIMENSIONS INCLUDING APPLIED FINISH AND ARE GIVEN IN INCHES.

COLLINS-RADIO CO.  
 14214-PH-51-93  
 SIGNAL CORPS  
 REVIEWED *PME*  
 APPROVED *HLV*  
*PME*  
 DATE *24 JAN 56* SCALE *4/1*

CONNECTOR-PLUG

DEPARTMENT OF THE ARMY  
 SIGNAL CORPS ENGINEERING LABORATORIES  
 FORT MONMOUTH NEW JERSEY  
*SM-B-283181*